

2018/19

**KEY CHARITY
PROJECTS AND
PARTNERSHIPS**

02.

ABOUT US
PG 3



OUR WORK
2018/19
PG 4

2018/19 IN
REVIEW
PG 5

WHAT WE
DO
PG 6

MEET
TABAROK
PG 7

HOW WE
WORK
PG 8

UK
PARTNERS
PG 9-10

INDIAN
PARTNERS
PG 11

SPOTLIGHT
ON A
PARTNER
PG 12



OUR
FUTURE
PLANS
PG 13



MANY
THANKS
TO OUR
PARTNERS
PG 14

FINANCIAL
SUMMARY
PG 15

WITH
THANKS
PG 16

03.

ABOUT US

The **Monsoon Accessorize Trust** is a registered Charity that funds education, healthcare and creation of livelihood projects in Asia and the UK.

We believe that access to quality education, affordable healthcare and a sustainable income are paramount in eradicating poverty.



04.

OUR WORK



3.5%

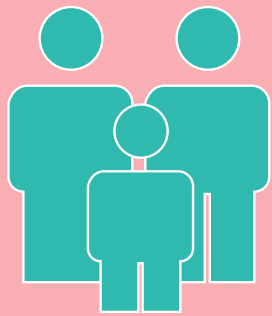
INCREASE
IN INCOME



SPENT

£257,148

ON GRANTS



SUPPORTED OVER

240,000

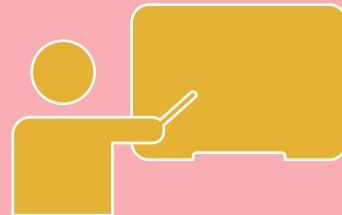
CHILDREN, FAMILY AND
COMMUNITY MEMBERS



2,500 WOMEN
& 3811 CHILDREN
GIVEN ACCESS
TO QUALITY
HEALTHCARE



2000 GIVEN
TRAINING,
EQUIPMENT AND
AN OPPORTUNITY
TO GAIN A
SUSTAINABLE
INCOME THROUGH
THE CREATION
OF JOBS



3,600 CHILDREN
GIVEN ACCESS
TO QUALITY
EDUCATION



2,000 COMMUNITY
MEMBERS GIVEN
ACCESS TO CLEAN
WATER, HYGIENE
PRODUCTS AND
SANITATION



THE MONSOON
ACCESSORIZE
TRUST
EST. 1994

05.

2018/2019

A message from the CSR and Sustainability manager Starzeus...

"I am passionate about the sustainable change that we can make together, for children, women and all families"

I am immensely proud on how the last year the MA Trust has prospered and developed, together we have reached more beneficiaries, increased our finances and diversified the support we give to those less fortunate. We continue to provide access to quality education, provision of healthcare resources, creation of jobs through sustainable income generating activities and providing access to clean water and sanitation.

06. □

WHAT WE DO

We work in three main areas:



EDUCATION

Directly supporting children, youth and adults to go to school or vocational classes and remain until completion.



HEALTHCARE

Creating access to life-changing healthcare services for mothers and children.



INCOME GENERATION

Equipping the most vulnerable and marginalised community members with the training, skill-set and opportunities to generate a sustainable income through livelihoods.

07.

MEET TABAROK

Poverty and immigration on one hand, and losing her daughter whom she loved so dearly on the other hand impacted her entire life; Tabarok sunk into depression, twice she had a stroke and she was hospitalized. The doctors advised her to find a hobby or a job and try not to be alone.

So she joined our silk weaving programme, since she started to learn weaving in our centres, and she attended workshops on silk dying, and designing. After she learned weaving, we provided her with a loom, and necessary materials for weaving. Now she has a loom in her house and spends most of her time creating garments to sell. She says:

"I was very eager to learn weaving. It was enjoyable for me. I used to go earlier than the others to the weaving centres, and I was trying not to miss any of the training. Since then, I didn't have time to think about my past or anything else. After I learned weaving, I was given a loom and some other accessories. I spend most of my time behind the loom now".

Tabarok sells the shawls she makes in the bazaar, or to relatives and neighbours and sometimes she receives orders from local factories.



08.

HOW WE WORK

AT THE MONSOON ACCESSORIZE TRUST WE ARE SELECTIVE ABOUT WHO WE PARTNER WITH AND FUND.

Through a talented and trusted group of partners. We believe the most effective way to operate is to work with partners with strong experience and expertise to local communities in Asia and the UK.

We aim to develop long lasting partnership, this allows us the opportunity to work closely with our partners to ensure the best programmes are implemented to the women, children and communities that we support. On occasion we do fund one-off project that addresses emergency need if a country or community is impacted by a severe disaster.

Between 2017/2018 we worked with 18 UK based Charity partners and 5 Indian based charities. All of whom are required to have governance controls in place, including child protection and safeguarding policies. Programme proposals are agreed in accordance to providing:

- A DETAILED PROJECT PROPOSAL
- ALIGNMENT WITH OUR STRATEGY
- A MONTHLY IMPLEMENTATION PLAN
- A MONITORING AND EVALUATION PLAN

A formal grant agreement is then signed by the partner and the Monsoon Accessorize Trust, outlining the grants terms including financial reporting and controls.

We like to work closely with our partners to monitor the progress of the programmes they implement against the agreed proposal. We maintain regular contact and receive regular formal updates the programmes progression. We also conduct programme visits to all of our projects. All of these activities help us to ensure that funds donated to the Monsoon Accessorize Trust are used in an ethical and transparent way.



09. □

UK PARTNERS

WHO WE WORKED WITH

THE TEDDY BEAR FOUNDATION

This year MA Trust and The Teddy Bear Foundation have co-operated together and have provided children with vests and blankets, which help calm excitable children and for special need schools they have given them sensory goods and toys. Every year at Christmas, the Teddy Bear Foundation funds trips to the pantomime and circus visits.

THE FLYING SEAGULL PROJECT

This year MA Trust and The Flying Seagull Foundation have worked together and travelled within the UK to various hospices to entertain ill children and overseas to refugee camps to deliver shows, which help distract children from harsh realities of camp life. They have provided 6 sessions of clown doctors in Great Ormond Street Hospital, 3 welcome events for refugee families and their local communities, 2 carer and children events for children in local authority care and 1 Surestart event in Herts for vulnerable mothers and their children at Christmas. To help them increase their confidence. They have helped 13 disabled children to participate in activity trips and residential adventures.

WOMENS AID (IRELAND)

This year the MA Trust and Women's Aid worked together by providing life-saving services and helped build a future for domestic survivors. They run the only national, free, domestic violence 24/7 Helpline. Their helpline has answered 18,187 calls in 2017. They have had 728 1-to-1 support visits. They had 15,833 disclosures of domestic abuse to Women's Aid Direct Services in 2017; 10,281 disclosures of emotional abuse, 3,502 disclosures of physical abuse, 607 disclosures of sexual abuse (Including 323 disclosures of rape) and 1,443 disclosures of financial abuse.

THE CHILDREN'S ADVENTURE FARM TRUST

This year MA Trust and The Children's Adventure Farm Trust have collaborated and provided a variety of programmes for terminally ill, disabled and disadvantaged children from all over the North West. In 2018 they have aimed to help 3000 children to do this, they had raised £1 million.

ABERLOUR OPTIONS ADVENTURE

This year MA Trust and Aberlour Options Adventure have worked together to give all children an equal chance, as many children and young people with disabilities are excluded from mainstream adventure breaks. They connect children with disabilities with mainstream providers of adventure activities, so they can make friends, learn new skills and to help them increase their confidence. They have helped 13 disabled children to participate in activity trips and residential adventures.

SAFER WALES

This year MA Trust and Safer Wales have worked together with victims of domestic violence, rape, sexual abuse, exploitation and hate crime. They have directly supported over 118 women that were exploited through prostitution to reduce the risk and to reduce homelessness. Protected 627 women and 19 young girls who have experienced domestic abuse and sexual violence in Cardiff. Safer Wales have provided 1,400 women with resettlement plans, such as housing, debt and finance support to reduce reoffending.

10.

UK PARTNERS

WHO WE WORKED WITH

DANDELION TIME

This year MA Trust and Dandelion Time have co-operated by helping troubled families with an individually focused therapeutic undertaking. Families work with each other to restore trust, gain strength and to make positive and sustainable changes in their lives. They had helped 94 children and their families through their main Family Programme.

MAD HATTERS CHILDRENS CHARITY

This year MA Trust and Mad Hatters Children's Charity have collaborated and helped children with special educational needs and disabilities across the Midlands. They help over 2,000 children every year by providing them with fun educational events and activities. They had workshops which helped develop confidence by making new friends, developing social skills and becoming more independent. More than 700 children with special educational needs and disabilities had participated in this workshop.

INCLUDE YOUTH

This year MA Trust and Include Youth have supported care experienced young people to benefit from a full and active summer programme, such as BBQ's Beach trips, Go-Karting, Art groups, Bus tours and high ropes courses. Throughout this they have helped in total of over 100 young people.

COLCHESTER AND TENDRING WOMEN'S REFUGE

This year MA Trust and Colchester and Tendring Women's Refuge have worked together by providing specialist support for community clients who needed emotional, physical and practical support. They also provided a 24-hour call and evening support. They had a safeguarding team to support anybody that was admitted to the hospital. In total between 2017-18 they had 688 survivors and 121 people had counselling.

TY HAFAN

This year MA Trust and Ty Hafan have collaborated in supporting families throughout their journey by providing them access to physical and medical responsibility of their unwell child and allowing parents to relax. They are given the opportunity to spend quality time with their family by doing normal family activities. They have helped on average 112 families who received emotional and practical support from their family support practitioners and 20 families a month were supported by parent or carer groups. 37 children were admitted to the hospice and an average of 251 children were supported during the year.

UNSEEN

This year the MA Trust and Unseen, collaborated to eradicate modern day slavery through the creation of emergency shelter for survivors of modern day slavery, a 24-hour helpline and by raising awareness of signs, legalisation and support services to potential victims. They have answered over 3,700 calls and received around 730 webforms.

11.

UK PARTNERS

WHO WE WORKED WITH

SOLACE WOMEN'S AID

This year MA Trust and Solace Women's Aid have worked together, and their free advice line had taken over 100 calls every week. They work to empower survivors and to help them rebuild their lives through various specialist services such as refuges, advice, counselling, advocacy, support groups and family & children's projects helping them to live

CORNWALL REFUGE TRUST

This year MA Trust and Cornwall Refuge Trust have worked together to support people who have gone through domestic abuse by providing a 24-hour domestic abuse helpline and supporting and advising survivors to have a safer and happier future. They have recorded a total of over 2200 helpline calls received, calls include those seeking advice and support regarding domestic abuse or those seeking refuge due to domestic abuse.

THE BENJAMIN FOUNDATION

This year MA Trust and Benjamin Foundation have collaborated and helped over 100 vulnerable young adults every night by providing them with a home and helped over 2,000 young people, children and families in Norfolk and Suffolk every year. They support them through various services such as one-to-one emotional wellbeing for schools, youth clubs and youth drop-outs. Also, they offer positive activities for young people who have limited opportunities in life.

ST MARY'S SECRET GARDEN

This year MA Trust and St Mary's Secret Garden have delivered over 2500 direct services, such as over 90% services were given to people with disabilities/long-term health issues and 70% were therapeutic and wellbeing placements. For over 25 years it has offered a safe space where people with support needs and the local community can get hands-on experience of gardening, gain a sense of inclusion and receive the benefits of horticulture and other ecotherapy activities.

GRACE HOUSE NORTH EAST

This year MA Trust and Grace House North East are in Sunderland and have welcomed children and young people with complex disabilities, health needs and life-limiting conditions. 'We provide a fun, safe, exciting environment where children can come and live life to the full.' They have helped up to 5 children and young people every day to come Grace House for short breaks. They are also working with around 190 parents, carers and siblings offering a variety of services such as holistic therapies and counselling.

THE CALDECOTT FOUNDATION

This year MA Trust and The Caldecott Foundation have provided residential care for up to 50 children and young people aged 5 to 18 in comfortable homes with an assessment centre, on-site school, vocational learning centre and therapy service. They care for children who have significant social, emotional and behavioural difficulties, due to suffering severe neglect and trauma in the early stages of life.

12.

INDIAN PARTNERS

WHO WE WORKED WITH

RADICO WELFARE CENTRE

This year MA Trust and Radico Welfare Centre have co-operated and provided over 200 children with the chance to gain an opportunity. 28 students have been selected by teachers and have been given a full scholarship to a world class private school through the program 'Create a Future'.

MAGIC BUS

This year MA Trust and Magic Bus have worked together and have given 2000 children the opportunity to gain an education. The curriculum is specifically designed to prepare young people from relegated communities for employment. This will allow the children to learn life skills and to develop personal and social skills

SEVA MANDIR

(BALWADIS AND IMMUNISATION)

This year MA Trust and Seva Mandir have collaborated on 2 projects: Balwadis and Immunisation. Balwadis is a project which gives pre-school children from the age groups of 1 to 5 an opportunity to gain an education. Seva Mandir is currently supporting over 178 centres across their work area. The total children that were helped by this project are 120.

Immunisation is another project which offered free immunisation shots to mothers and children to prevent life-threatening illness caused mainly in rural areas to women that are unable to afford or access basic health-care. This project has helped a total of 6000 people; 2500 women and 3500 children.

AASHIANA

This year MA Trust and Shalom Global Foundation have collaborated to create the Aashiana Project and have supported 73 HIV positive families by providing them with nutrition in Delhi.

They have also provided educational support to 170 HIV infected and affected children from those 73 families. 40 women who are affected by HIV are being trained to make artificial jewellery and earning money to support their families.

READ'S

This year MA Trust and READ's have co-operated and provided 60 children with the opportunity of an education within their three doorstep schools. READ's believe 'empowering people by building their skills, capacities and assets, by creating an enabling environment with stakeholders committed to their socio-economic development.



15.

CHARITY FOCUS

SIMBA

Our donation offers support to grieving parents and guardians by providing them with access to local support groups, a memory box of their loved one and funds family rooms in maternity units so the parents/guardians can have privacy with their loved ones. their lives independently.

CHRISTIAN AID

Our support helps improve the education, health, nutrition of children and to improve skills for enhanced livelihood options among young people and women of the ragpicker community and enhance their overall well-being. Please see image, our CSR and Sustainability manager Starzeus Hassan-McGhee visited a landfill site where children are in search for rags in order to generate an income. This project will transition the children into a bespoke education programme and support their parents in gaining a sustainable livelihood through tackling waste management within landfill sites.



SMILE FOUNDATION

Together the MA Trust and the Smile Foundation has opened a skill centre, we enrol over 50 students aged 18-28 year olds and teach bespoke employability skills, aimed at marginalised communities. Which is designed to equip the youth with the correct skill-set and knowledge to gain full-time employment within the retail sector.

JEEVICKA

We offer support to over 280 women where we deliver training on entrepreneurship and livelihood opportunities like fishery, crab cultivation, small agricultural activities, bee hiving and honey production. We disburse interest-free loans under microfinance activities. We focus on preserving and building the bee habitat by training women on bee keeping and to promote income generation opportunities by selling their pure honey.

TURQUOISE MOUNTAIN

We partner with Turquoise Mountain to train over 150 artisans in the art and craft of jewellery making in Myanmar, we deliver highly-skilled workshops and equip the artisans with the knowledge and skill-set to learn a craft and secure a livelihood.

WATER HARVEST

MA Trust is proud to support WaterHarvest in providing water irrigation supports to over 2,000 families in rural India. The access to water drastically increase the quality of life to people in the rural community.

PATCH

Our donations provides free food parcels, clothing and much needed essentials to these in financial crisis. The donation mainly supports service users affected by delay in benefits, fire, theft or escaping emergency situations

13.

MAGIC BUS

Magic Bus was established in 1999 by founder Matthew Spacie. It is an organisation that helps children and young people in India that are living in poverty, their work has spread across 22 states in India to help more than 375,000 children and 10,000 young people out of poverty.

In 2017-18 Magic Bus have provided 1,533 children with an education. The curriculum is specifically designed to prepare young people from relegated communities for employment. This will allow the children to learn life skills and to develop personal and social skills. The curriculum that Magic Bus cover are core skills to help children when they leave school.

The key skills are:



COMMUNICATION

So they know what their rights are at the workplace are violated, professional ethics and peers can influence each other positively to attend and participate at work. They develop communication skills effectively by talking to their colleagues, therefore overcoming fear of public speaking.



PROBLEM SOLVING

They learn to make informed decisions. They will learn to explain 3 impacts of taking informed decisions on self and others. Peer pressure would affect their career choices and how they would deal with it.



MANAGING SELF

By doing a SWOT analysis of themselves with respect to their interests and become aware of strategies to overcome constraints and capitalize on their strengths.



TEAM WORK

By doing a SWOT analysis of themselves with respect to their interests and become aware of strategies to overcome constraints and capitalize on their strengths.

PRIYA'S STORY



Incredible confidence is hard to miss - and she knows it. A star Science student, she already knows she wants to be a doctor. Just as she humbly states she does 'well' at school, her mother cannot help but interrupt to tell us she has consistently topped her Class for three years.

Priya is the youngest of four siblings, all of whom have quickly made big steps towards big dreams. Her older sister, Renuka, wakes up at 5 am every morning to attend intensive professional Kabaddi training at the local police camp, and is set on becoming a part of the Delhi Police Force:

'India needs more women police officers like us,' she says. Priya's other sister, Pinky, was a teacher at the local YMCA before joining a Magic Bus livelihood centre - she now has a steady job at Pressto, the global dry-cleaning outlet. All this becomes even more remarkable when you hear their mother speak of where these girls were just a few years ago - "They have changed so much: they have such polished manners and grace now, and have grown into highly compassionate, dedicated, talented girls". "Mera sar uncha kar diya hai meri ladkiyon ne", she says, beaming with pride.

SPOTLIGHT ON A FUNDRAISER

Naier, 69 years old from Canary Wharf works for Monsoon Accessorize as a sales assistant. She wanted to raise money for charity, by doing a free run. Naier had taken the initiative and effort to train for this big achievement and had ran more than 18 miles within 4.5 hours.



14.

OUR FUTURE PLANS

WE REMAIN WHOLLY COMMITTED TO DELIVERING GREATER CHANGE FOR THE MOTHERS, CHILDREN AND COMMUNITIES THAT WE SUPPORT.

WE BELIEVE IN BEING TRANSPARENT WITH HOW WE DISTRIBUTE GRANTS, WITH YOUR VALUED SUPPORT WE ARE WORKING TOWARDS A SET OF GOALS THAT DEMONSTRATE OUR AMBITION TO MAKE POSITIVE CHANGE.



16.

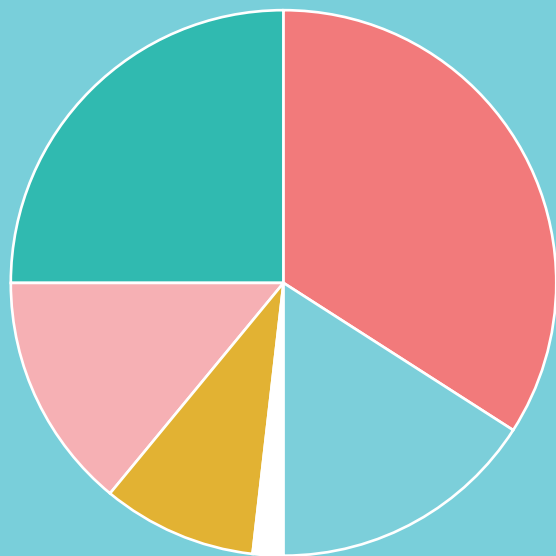
MANY THANKS

TO OUR PARTNERS

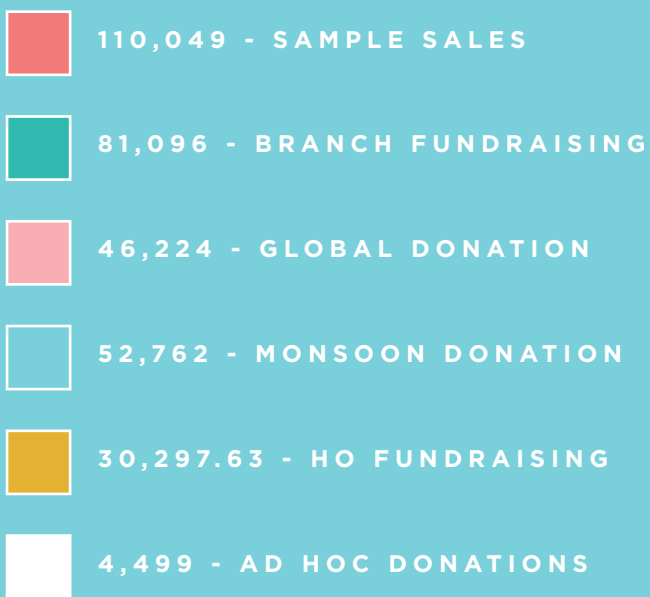


FINANCIAL

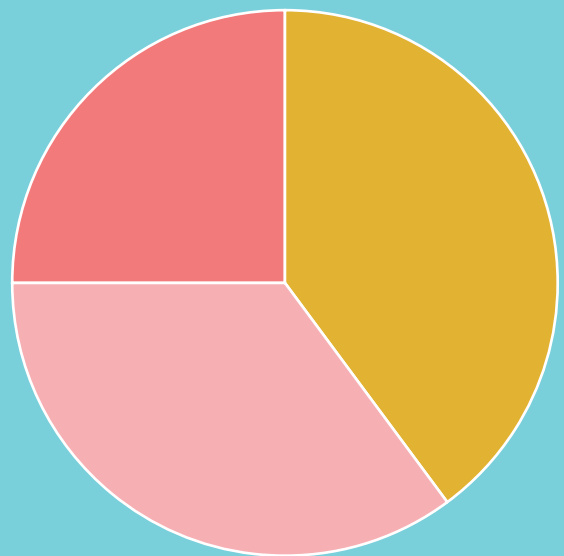
FINANCIAL INCOME



INCOME STREAMS



FINANCIAL EXPENDITURE



% SPENT ON PROGRAMMES



18.

WITH THANKS

“A huge thank you to our founder, Peter Simon, our funders, partners, suppliers and staff for their invaluable time, generosity and commitment. With your continued support, together we can change the lives of thousands of children, family and community members in the UK and Asia. We look forward to working with you next year”.

**BOARD OF TRUSTEES:
DAWN PINE
MARK HOLLOWAY**

